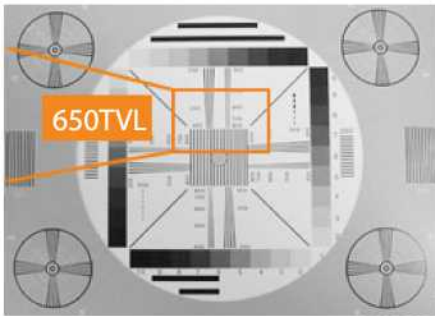


EFFIO-E

600TVL Camera
650TVL Camera

EFFIO - E



600TVL / 650TVL High Resolution



Motion Detection



OSD Menu



Privacy Masking



2-DNR OFF



2-DNR ON

2D DNR

Reduces noise interruption for brighter colors in images



600TVL/650TVL Camera (Effio-E)



Features:

- 1/3" Color SuperHAD II Low Lux CCD
- High Resolution 600TVL/650TVL(Sony Effio-E DSP)
- Low Light Sensitivity
- True Day/Night OLP Switching Function (Optional)
- DDNR 2D (Digital Noise Reduction)
- Motion Detection 24X16 Zones; sensitive and alarm time are adjustable.
- OSD Control (OSD key on the cable for easy performance)
- Wall-mount bracket for option (Cabel through version)
- IP66&IP67 Weatherproof & Vandalproof housing(Optional)
- IR Day/Night with 24pcs or 54pcs leds (Optional)
- Lens Options: Fxied lens f6.0/3.6/2.8/2.3mm,
Vari-focal (fixed iris or auto-iris) lens 4~9mm & 2.8~11mm
- DC12V or DC12V/AC24V Auto switching

Specification

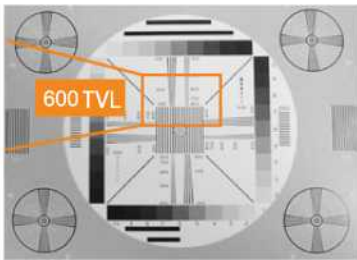
TV Systems	PAL or NTSC
Image Sensors (CCD)	1/3" Sony Super HAD II Low Lux CCD(600TVL) 1/3" Sony 960 ExView Super HAD II CCD(650TVL)
Number of Total Pixels	PAL: 795(H) x 596(V); NTSC: 811(H) x 508(V)
Number of Effective Pixels	PAL: 752 (H) x 582 (V); NTSC: 768(H) x 494(V)
DSP	Sony Effio-E
Horizontal Resolution	600 TVL/650 TVL
Minimum LUX	Color 0.05 LUX/ B&W 0.03 LUX
Scanning System	2:1 Interlace
Synchronization	Internal linelock
Infrared Spectrum	850nm
S/N Ratio	Over 52dB (AGC off)
ATR Wide Dynamic Range	ON/OFF Adjustable
Video Output	1Vpp
Menu	OSD Control
Camera ID	Title (Location)
Digital Day/Night Mode	Color/B&W/Auto
Electronic Shutter	Auto/Manual Selectable.
AGC	ON/OFF Adjustable
AWB	AWB/ATW/Manual/USR1/USR2/Anti Color Rolling
BLC	BLC/HLC/OFF
Flickerless	ON/OFF
Digital Dynamic Noise Reduction	2D
Language	English/Japanese/German/French/Russian/Portuguese/Spanish
Motion Detection/Privacy masking	24X16 Motion Detection Zones / 8 Mosaic Zones
Automatic IRIS	Video / DC Auto Iris Lens
Power Supply	DC12V or DC12V/AC24V Auto switching
Operating Temperature	-10°C ~ +50°C
Storage Temperature	-20°C ~ +60°C



Vigital - BLUE

600TVL Wide Dynamic Range Camera (Vigital-Blue)

V - BLUE



600TVL High Resolution



WDR OFF WDR ON
Wide Dynamic Range
Enhances bright and dark areas



8 ZONES
Privacy Masking



3-DNR OFF 3-DNR ON
2D & 3D DNR
Reduces noise interruption for brighter
colors in images



Motion Detection



normal Horizontal and Vertical Flip

Image Rotation

SETUP MENU		
LENS	ATW	SETUP MENU
SHUTTE	SPEED	PRIVACY
WHITE B	DELAY	DAY/NIGHT
BACKLIK	ATW FI	NR
PICT AD	ENVI	CAMERA ID
NEXT AD		SYNC
EXIT		LANGUAGE
		CAMERA RESET
		BACK
		EXIT
		SAVE ALL
	RETUR	

OSD Menu
Multi Functions Control



20X max
Electric Zoom

600TVL Wide Dynamic Range Camera (Vigital-Blue)



Features

- 1/3" Color SuperHAD II Low Lux CCD
- High Resolution 600TVL Wide Dynamic(V-Blue DSP)
- Low Light Sensitivity
- True Day/Night OLP Switching Function (Optional)
- Wide Dynamic Range
- DDNR 2D & 3D (Digital Noise Reduction)
- ATR Wide Dynamic Range ON/OFF Adjustable
- Motion Detection 8X6 Zones; sensitive and alarm time are adjustable.
- OSD Control (OSD key on the cable for easy performance)
- Wall-mount bracket for option (Cabel through version)
- IP66&IP67 Weatherproof & Vandalproof housing(Optional)
- IR Day/Night with 24pcs or 54pcs leds (Optional)
- Lens Options: Fxied lens f6.0/3.6/2.8/2.3mm, Vari-focal (fixed iris or auto-iris) lens 4~9mm & 2.8~11mm
- DC12V or DC12V/AC24V Auto switching
- Sense Up (Star Night) 0 - x128 adjustable
- Digital Zoom 0 - x64; with Digital PAN/Tilt
- H and V Mirrors and Freeze options

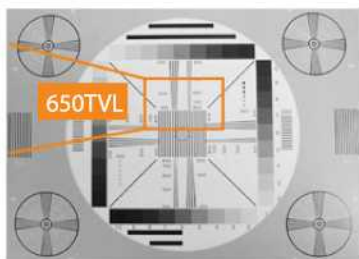
Specification

TV Systems	PAL or NTSC
Image Sensors (CCD)	1/3" Sony Super HAD II LOW LUX CCD
Number of Total Pixels	PAL: 795(H) x 596(V); NTSC: 811(H) x 508(V)
Number of Effective Pixels	PAL: 752 (H) x 582 (V); NTSC: 768(H) x 494(V)
DSP	Vigital - blue
Horizontal Resolution	600 TVL(Low Lux)
Minimum LUX	Color 0.05 LUX/ B&W 0.03 LUX
Scanning System	2:1 Interlace
Synchronization	Internal /Inelock
Infrared Spectrum	850nm (Optional)
S/N Ratio	Over 52dB (AGC off)
ATR Wide Dynamic Range	ON/OFF Adjustable
Video Output	1Vpp
Menu	OSD Control
Camera ID	Title (Location)
Digital Day/Night Mode	Color/B&W/Auto
Electronic Shutter	Auto/Manual Selectable.
AGC	ON/OFF Adjustable
AWB	AWB/ATW/Manual/USR1/USR2/Anti Color Rolling
BLC	BLC/HLC/OFF
Flickerless	ON/OFF
Digital Dynamic Noise Reduction	2D & 3D
Language	English/Japanese/German/French/Russian/Portuguese/Spanish
Motion Detection/Privacy masking	8X6 Motion Detection Zones / 8 Mosaic Zones
Automatic IRIS	Video / DC Auto Iris Lens
Power Supply	DC12V or DC12V/AC24V Auto switching
Operating Temperature	-10°C ~ +50°C
Storage Temperature	-20°C ~ +60°C
Lens	Fixed lens: f6.0/3.6/2.8/2.3mm; Vari-focal(auto iris) lens: 4~9mm & 2.8~11mm

*Specifications are subject to change without prior notice

Vigital - RED

650TVL Wide Dynamic Range Camera(Vigital-RED)



650TVL High Resolution



WDR OFF WDR ON
Wide Dynamic Range
Enhances bright and dark areas



8 ZONES
Privacy Masking



2-DNR OFF 2-DNR ON
2D DNR
Reduces noise interruption for brighter colors in images



Motion Detection



normal Horizontal and Vertical Flip
Image Rotation

SETUP MENU

LENS	ATW	SETUP MENU	
SHUTTER	SPEED	PRIVACY	OFF
WHITE BALANCE	DELAY	DAY/NIGHT	AUTO
BACKLIGHT	ATW F	NR	
PICTURE ADJUST	ENVIRONMENT	CAMERA ID	OFF
NEXT		SYNC	INT
EXIT		LANGUAGE	CHINESE
		CAMERA RESET	
		BACK	
		EXIT	SAVE ALL

OSD Menu
Multi Functions Control



20X max
Electric Zoom

650TVL Wide Dynamic Range Camera(Vigital-Red)



Features:

- 1/3" Color SuperHAD II Low Lux CCD
- High Resolution 650TVL Wide Dynamic (Vigital - Red DSP)
- Low Light Sensitivity
- DDNR 2D (Digital Noise Reduction)
- ATR Wide Dynamic Range ON/OFF Adjustable
- Motion detection with output.
- OSD Control (OSD key on the cable for easy performance)
- True Day/Night (Optional)
- IP66 or IP67 Weatherproof & Vandalproof housing(optional)
- Lens Options: Fxed lens F6.0/3.6/2.8/2.3mm, Vari-focal (auto-iris) lens 4~9mm & 2.8~11mm
- DC12V or DC12V/AC24V Auto switching
- Digital Slow Shutter --- moon light technology/Sense Up
- Wide Dynamic Range
- Electric Zoom: 20X max
- Lens Shading Compensation
- Privacy Mask: 8 zones
- Image Rotation: Horizontal and Vertical Flip

Specification



TV Systems	PAL or NTSC
Image Sensors (CCD)	1/3" High Sensitivity Color CCD
Number of Total Pixels	PAL: 795(H) x 596(V); NTSC: 811(H) x 508(V)
Number of Effective Pixels	PAL: 752 (H) x 582 (V); NTSC: 768(H) x 494(V)
DSP	Vigital-Red
Horizontal Resolution	650 TVL(Low Lux)
Minimum LUX	Color 0.05 LUX/ B&W 0.03 LUX
Infrared LED	24pcs or 54pcs leds (Optional)
Scanning System	2:1 Interlace
Synchronization	Internal linelock
Infrared Spectrum	850nm(Optional)
S/N Ratio	Over 52dB (AGC off)
ATR Wide Dynamic Range	ON/OFF Adjustable
Video Output	1Vpp
Menu	Multi functions control
Camera ID	Title (Location)
Digital Day/Night Mode	Color/B&W/Auto
Electronic Shutter	Auto/Manual Selectable.
AGC	ON/OFF Adjustable
AWB	2500 - 10,500K
	BLC/HLC/OFF
BLC	ON/OFF
Flickerless	Horizontal and Vertical Flip
Image Rotation	Digital Slow Shutter --- moon light technology/Sense Up
Digital Dynamic Noise Reduction	2D
Electric Zoom	20X max
Language	English/Japanese/German/French/Russian/Portuguese/Spanish
Motion Detection/Privacy masking	Motion detection with output./ 8 zones
Automatic IRIS	Video / DC Auto Iris Lens
Power Supply	DC12V or DC12V/AC24V Auto switching
Operating Temperature	-10°C ~ +50°C
Storage Temperature	-20°C ~ +60°C
Lens	Fixed lens: F6.0/3.6/2.8/2.3mm; Vari-focal(auto iris) lens: 4~9mm & 2.8~11mm

*Specifications are subject to change without prior notice



IIR

IR Intelligent Technology

IIR(IR Intelligent Technology)applies Vigital self-developed DSP technology means to solve the problem of "Torch Effect"&"Over-bright"&"Big Noise",in which way to improve night version performances of the IR day/Night camera lines.

(24pcs LEDs)
(1m)



W/O IIR



With IIR

(24pcs LEDs)
(3~5m)



W/O IIR



With IIR

Torch Problem



Over-bright Problem



Large Noise



Box Camera Series:



G17:124.5Lx65Wx42.8H



G13B :133Lx65.5Wx55H

Bome Camera Series:



D18/D18R:Ø127x102.2H



D30:Ø94x67.2H



D28/D28R:Ø150x106.5H



VPM:Ø120x98H

IR Day/Night Bullet Camera Series:



OC1:Ø45x63L



WPS2:Ø49x82L



SPS4U:Ø64.5x112L

IR Day/Night Easy Adjustment Camera Series:



EC5:Ø75x130L



EC6:Ø79x123.9L



EC7:243Lx77.5Wx118H

IR Day/Night Waterproof&Vandalproof Bullet Camera Series:



WPL:99.3Lx79.9Wx72.9H



VPB:Ø82.8x111L



SPS11:Ø105x172L



Vigital - IP CAMERA

Feature :

Real-Time Transmission at D1 Resolution

IP Encoder can transmit distortion-free images under all resolution modes at real-time speed as far as network bandwidth is allowed.

Built-In Web Server

With a built-in web server, versatile web operations such as live monitoring, playback, system configuration are available over the internet, anytime & anywhere.

Local Recording by USB Media

Using USB media, user can instantly record images by programmed setting when alarm is triggered by motion detection and/or network connection is failed, to avoid any loss of valuable data.

Network Recording by SMS

Vigital provides SMS (Master Storage Software), to record massive amount of video data from all Vigital IP products with full flexibility over network.

Compatible to Same Network Platform as DVR

A single remote software platform to enable total management of multiple devices over network.

Remote PTZ Control and Two-Way Audio

Many versatile functions such as remote PTZ control, sensor & alarm output are available. Two-way audio is one of the features to communicate between installation site and control center.



G 17



Specification

Compression Algorithm		Video :H.264, Audio:G723.1
Operating System		Embedded Linux
Video	Input	1 Ch
	Loop-Out	1 Ch
	Mode	NTSC/PAL Selectable
Audio Input / Output		1 Ch /1 Ch(Two-Way Audio)
Alarm Input/ Output		1 Ch/1 CH
NETWORK	Streaming Protocol	10/100 Base-Tx Ethernet(RJ45)
Transmission	Transmission speed	30/25 fps (CIF,2CIF&D1)with Dual-Stream
	Connection Mode	Fixed IP ,DHCP & DDNS
Recording	Patten	Local Recording by USB Memory Stick and Network Recording by SMS
	Resolution	NTSC:352×240,720×240,720×480, PAL:352×288,720×388,720×576
	Mode	Continuous, Scheduled, Sensor-Activated &Motion Detection Recording
	Remote PTZ Control	Pan/Tilt/Zoom/Focus/Iris by RS-485 Port
Remote Management	Software	RMS(Remote Manager S/W) & CMS(Central Manager S/W)
	Web(IE)	SMS(Storage Manager S/W –Master Storage System) Live Monitoring,Playback& System Configuration
System Recovery after Power		Auto-reboot by Watch-Dog
Advanced Functions		Multi-LANGUAGE ,System Upgrade by USB & Network
Power		12 V 1.5A DC Adaptor
Storage Temperature and		-20~60 °C / 20~95 % RH
Operating Temperature and		5~40 °C / 20~80% RH
Dimension (W×D×H)		D124.5xW65xH42
Certification		CE&FCC



CMS

(CentralManager Software)

Enterprise-Level Central
Management Software

Vigital CMS is a powerful centralized management solution that offers users full flexibility to control the entire system over the network. Users can set automatic backup schedule for effective handling of massive volume of video data, and also get the full monitoring on system status.



Max. 180 Channel Real-Time Monitoring

STL CMS can monitor up to 180 channels simultaneously from anywhere in the world. A maximum 144 channels can be shown on one monitor with a wide range of screen split modes such as 1, 4, 9, 16 and more....



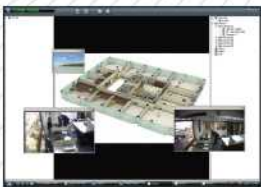
Up to 5 Monitors on a Single P/C Workstation

User can connect up to 5 VGA monitors on a single P/C workstation under much less CPU burden and thus effectively allocate each monitor for specific purpose.



Cloning Features to Create a Separate Window

Only STL CMS is equipped with WINDOW CLONING feature which is one of the quite unique and effective tools for flexible system management, ensuring users to create up to 4 additional windows as far as system hardware is allowed.



Multi-Layer E-Map Editor

E-Map feature is to provide graphic map information for users to overview entire CCTV layout, ensuring efficient management of the connected devices over network.



Auto Network Connection & Instant Recording

When sensor at DVR side is triggered, network will be automatically connected between DVR and CMS P/C and then the image of sensor-triggered channel will be shown as full screen mode at CMS P/C. Besides, such image can be recorded at same CMS P/C according to user's setting.



Scheduled Remote Backup

User can backup the data of multiple DVRs to CMS P/C based on pre-defined schedule.

Many More...

System Health Check, Multiple F/W Upgrade, Various Search & Backup Modes and IP Auto-Detection for whole connected devices,....



MMS

(MobileManager Software)

Mobile Viewer Software
by Smart Phones

MMS (Mobile Viewer Software) is the mobile Viewer software that allows user to view video image from the IP camera or CMS on the mobile phones. By installing the corresponding MMS software On the mobile phone ,user can view live video image through WAP,Wi-Fi or Dial-up Network.

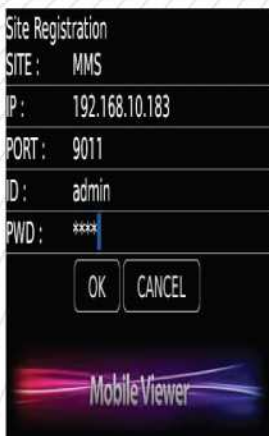
• iPhone



• Google Android Phone



• Black Berry



• Windows Mobile O/S Phone



O/S	Maker	Smart Phone
Windows Mobile	Microsoft	Windows Mobile O/S Phone
Black Berry	RIM	Black Berry Phone
iPhone	Apple	iPhone
Android	Google	Google Android O/S Phone



NVS

Network Video Solutions

Vigital Network Video Solutions

The needs for combined network solution is gradually increasing reflected by the launch of Vigital's new series of IP camera, Vigital's "Network Video Recorders Solutions " comprising CMS,RMS,SMS &MMS guarantees unlimited scalability and seamless integration of all Vigital IP cameras products over the network.

Model	Description
CMS (CentralManager S/W)	Enterprise-LEVEL Central Management Software
RMS (RemoteManager S/W)	16 Channel Remote Management Software
SMS (StorageManager S/W)	Master Storage Software to be used with IP Products
MMS (MobileManager S/W)	Mobile viewer software to view video image on the mobile phones



RMS

(RemoteManager Software)

16 Channel Remote
Management Software

RMS is the best remote management software to be provided with all of Vigital IP products, Offering Live Monitoring ,VOD playback with Intelli-Search Bar, Live & VOD Backup by AVI Format and Built-In Backup Player.

Specification of CMS & RMS

Model	CMS (CentralManager)	RMS (RemoteManager)	
Central Management	Status Information	Video, Audio, Sensor, Relay, Recording Mode & Speed, Resolution	No
	HDD Information	Capacity, Usage (%), Temperature, & Format Type, Model	No
	System Information	CPU Type, CPU Speed, System Memory, MAC Address., Signal type, etc.	No
	Version Information	Model name, S/W version, H/W version	No
	Network Information	IP Address, Subnet Mask, Gateway & DNS	No
	Connection Information	Maximum connection, Current connection, Bandwidth, Login user	No
	IP Auto-Detection	Automatic detection of IP address over network	No
	Firmware Upgrade	One-click upgrade for multiple registered DVRs	No
	Schedule Backup	Programmable archiving schedule from multiple registered DVRs	No
	Remote System Configuration	Remote configure DVR through IE browser	Remote configure DVR through IE browser
	Remote Rebooting	Rebooting of DVRs over network through IE	Rebooting of DVRs over network through IE
	Log Viewer	Collecting log data from registered DVRs	Event / System log search
	Connection Compatibility	Multiple connection of Embedded DVR, Streamer, IP camera	Multiple connection of Embedded DVR, Streamer, IP camera
	Group Management	Connection by Grouping	No
Time Synchronization	Time sync of multiple DVRs over network	Time sync of multiple DVRs over network	
Multi Monitoring	No of Monitor supported	Up to 5 monitors	Single monitor only
	New Additional Monitoring Windows (except for Basic One)	Creating new monitoring window by 36 channels each, up to 4 windows	No
	Basic Number of Channel per Window	Simultaneous 36 cameras monitoring	Simultaneous 16 camera monitoring
	Maximum Number of Channel	Simultaneous 180 cameras monitoring	Simultaneous 16 camera monitoring
	Camera Allocation	Independent allocation of cameras by easy drag & drop	No
	Auto Re-Connection	Auto rec-connect upon network recovery, Auto connect to previous View Layout	Auto rec-connect upon network recovery, Auto connect to previous View Layout
	Alarm Pop-up	Camera pop up upon alarm triggered	Camera pop up upon alarm triggered
	Remote Control Panel	Playback, Relay, PTZ, Live image tuning	Playback, Relay, PTZ
	Remote Playback	X16 forward / backward play	X32 forward / backward play
	Event View	Event / System logs (linked to playback)	Event / System log (linked to playback)
	Search Mode	Intelli-search, Event seach, File search	Intelli-seach, Event search
Miscellaneous	Printing, Snap Shot & Live AVI backup, De-interlacing, Digital Zoom, etc	Printing, Snap Shot & Live AVI backup, De-interlacing, etc	
E-Map	E-Map Editor	Easy editor by component drag & drop.	No
	Device Supported	Camera, Relay, Alarm, Link	No
	File Format	XML, JPG, BMP	No
	Layer Supported	Multi-layer of e-map supported	No
	Alert	Pop-up video windows by alarm trigger	No

(*) Specification is subject to change without prior notice



SMS

(StorageManager Software)

Master Storage Software to
be used mainly with IP Products.

Vigital provides its unique master storage solution, offering to record live video & audio data from all Vigital IP products over network and manage recorded data with full flexibility under effective combination with CMS, user can build up perfect total management system like no others in the security industry.

Simultaneous Recording up to 200 Channels

SMS can simultaneously record up to 200 channels over network. Moreover, it provides pre & post event recording by sensor-activation.

Perfect Compatibility with CMS

SMS is perfectly compatible to CMS since both are operated under a unique STL network platform. SMS provides its data based image data when requested by CMS, and thus user can remotely search and playback the data on the master storage server just on CMS platform.

Live Monitoring of Recording Status

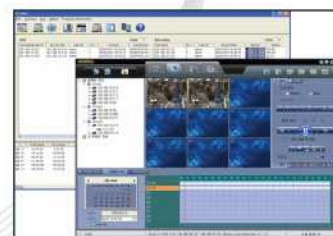
If user wants to make it sure to view recording status to avoid any data loss, pop-up screen (image player) can be shown by just one mouse click.

Quick Search Function

SMS supports Quick Search function to enable user to instantly search and playback the desired data.

Up to 23 Pieces of Multi-HDDs Management

Multi-HDDs management is one of the strong features of SMS. By using this capability, SMS can effectively handle massive volume of video & audio data and achieve long-term data storage.



WAP Connection

Mobile monitoring
by any kinds of phone
(2G & 3G Phone)

WAP(wireless Application Protocol) is a system which allows devices such as mobile phones to connect to the internet. If user wants to connect to the DVR especially under narrow-bandwidth network situation by using 2G cellular phone, it is recommended to use WAP Connection

It is the most simple and convenient way for mobile viewing because there is no need to install any client software on the phone. Just type in IP address on the phone, then clear JPEG image is automatically refreshed by about 5 seconds interval depending on the network situation.

- Input the IP address on the phone with following format.
<http://DVR IP/wap/index.html> (ex, <http://123.123.123.123/wap/index.html>)
- WAP Service is provided through web port (default: 80). If user has changed web port to 8088, then input the IP address as below.
<http://123.123.123.123:8088/wap/index.html>
- If you want to connect through DDNS, you have to get "Your Domain Name" registered through public DDNS server (Please refer to www.dyndns.com for registration).



MOBILE VIEWER LOGIN

USER ID

PASSWORD



SELECT CAMERA

CAMERA 01 CAMERA 02

CAMERA 03 CAMERA 04

BACK



MOBILE VIEWER

<http://112.216.66.186/wap/index.html>

MOBILE VIEWER LOGIN

USER ID

PASSWORD

1 2 3

4 5 6

7 8 9

* 0 #

CALL CHG ABC SYM



<http://112.216.66.186/cgi-bin/w>





DVR

CIF H.264 Network Digital Video Recorder(DVR)-A4 Series Full D1 H.264 Network Digital Video Recorder(DVR)-H4 Series

DA4-PE04V



FEATURES

- **Convenient**
The backup file can be directly generated to be with AVI format. Support for DVD, multimedia interface, LCD TV, computers, mobile phones and other players, without format conversion.
- **Mobile Monitor**
Anytime, anywhere, all in control
- **Multi-language system**
System directly supports Simplified Chinese, Traditional Chinese, English, German, French, Spanish, Portuguese, Italian, Russian, Turkish, Japanese, Korean, etc., total 12 languages.

Applications



Factory



Community

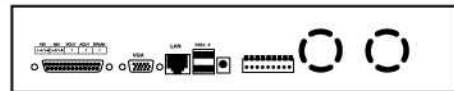


Supermarket



Garden

Back Panel



Specification

Model Number	DA4-PE04V	
Multi Task	Double Duplex	
Video Input	4 BNC	
Video Output	1 BNC, 1 VGA	
Audio Input	4 RCA	
Audio Output	1 RCA	
Line in	1 RCA	
Network	1 RJ45 10/100/1000MB, TCP/IP, PPPoE, DHCP, DDNS	
Alarm Input/Output	4/1	
Backup	USB 2.0, Network, DVD-RW	
Video Compression	H.264	
Average Bit Rate Size	2~3KBytes	
Live Display Resolution	NTSC 720 × 480/PAL 704 × 576	
Recording Rate	NTSC	352 × 240 240fps,1-channel D1 30fps
	PAL	352 × 288 200fps,1-channel D1 25fps
Recording Mode	Manual, Timing, Alarm, Motion Detection	
Communication Port	RS-485	
Playback Speed	Fast Forward × 1,2,4,8	
Controller	Mouse, Remote Control, Panel	
Power Input/Output	AC110V ~ 220V/DC12V 5A	
Dimension/Weight	315(W) × 225(D) × 52(H)/1.3Kg	
HDD	MAX 2*2000GB SATA	
Language	English/German/Spanish/Russian/Chinese/French/Korean/Turkish/Portuguese/Italian/Japanese	

DA4-PE08V
DA4-PE16V



FEATURES

- Convenient**
 The backup file can be directly generated to be with AVI format. Support for DVD, multimedia interface, LCD TV, computers, mobile phones and other players, without format conversion.
- Mobile Monitor**
 Anytime, anywhere, all in control
- Multi-language system**
 System directly supports Simplified Chinese, Traditional Chinese, English, German, French, Spanish, Portuguese, Italian, Russian, Turkish, Japanese, Korean, etc., total 12 languages.

Applications



Factory



Community



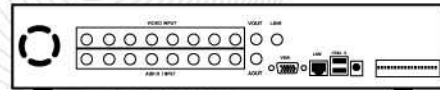
Supermarket



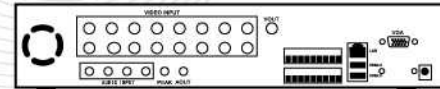
Garden

Back Panel

DA4-PE08V:



DA4-PE16V:



Specification

Model Number	DA4-PE08V	DA4-PE16V
Multi Task	Double Duplex	
Video Input	8 BNC	16 BNC
Video Output	1 BNC, 1 VGA	
Audio Input	8 RCA	4 RCA
Audio Output	1 RCA	
Line in	1 RCA	
Network	1 RJ45 10/100/1000MB, TCP/IP, PPPoE, DHCP, DDNS	
Alarm Input/Output	4/1	16/1
Backup	USB 2.0, Network, DVD-RW	
Video Compression	H.264	
Average Bit Rate Size	2~3KBytes	
Live Display Resolution	NTSC 720 × 480/PAL 704 × 576	
Recording Rate	NTSC 352 × 240 240fps	352 × 240 480fps
	PAL 352 × 288 200fps	352 × 288 400fps
Recording Mode	Manual, Timing, Alarm, Motion Detection	
Communication Port	RS-485	
Playback Speed	Fast Forward × 1,2,4,8	
Controller	Mouse, Remote Control, Panel	
Power Input/Output	AC110V ~ 220V/DC12V 5A	
Dimension/Weight	315(W) × 225(D) × 52(H)/1.69kg	315(W) × 225(D) × 52(H)/1.87kg
HDD	MAX 2*2000GB SATA	
Language	English/German/Spanish/Russian/Chinese/French/Korean/Turkish/Portuguese/Italian/Japanese	



DH4-PE04V



FEATURES

- **IE browser as well as strong client control**
Host' functions and parameters can be configured by remote, and less than 64-channels large-scale centralized monitoring software will be presented.
- **Full D1 Playback**
8-channel full D1 real time recording and network transmission work simultaneously;
1-channel to 8-channel D1 playback.
- **Convenient**
The backup file can be directly generated to be with AVI format. Support for DVD, multimedia interface, LCD TV, computers, mobile phones and other players, without format conversion.
- **Mobile Monitor**
Anytime, anywhere, all in control
- **Multi-language system**
System directly supports Simplified Chinese, Traditional Chinese, English, German, French, Spanish, Portuguese, Italian, Russian, Turkish, Japanese, Korean, etc., total 12 languages.

Applications



Government



Bank

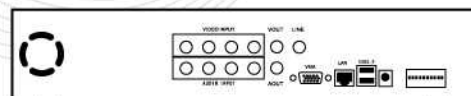


Post



Skyscraper

Back Panel



Specification

Model Number	DH4-PE04V	
Multi Task	Double Duplex	
Video Input	4 BNC	
Video Output	1 BNC, 1 VGA	
Audio Input	4 RCA	
Audio Output	1 RCA	
Line in	1 RCA	
Network	1 RJ45 10/100/1000MB, TCP/IP, PPPoE, DHCP, DDNS	
Alarm Input/Output	4/1	
Backup	USB 2.0, Network, DVD-RW	
Video Compression	H.264	
Average Bit Rate Size	6~9KBytes	
Live Display Resolution	NTSC 720 × 480/PAL 704 × 576	
Recording	NTSC	720 × 480 240fps
Rate	PAL	704 × 576 200fps
Recording Mode	Manual, Timing, Alarm, Motion Detection	
Communication Port	RS-485	
Playback Speed	Fast Forward × 1,2,4,8	
Controller	Mouse, Remote Control, Panel	
Power Input/Output	DC12V / 4A	
Dimension/Weight	350(W) × 240(D) × 70(H)/1.Kg	
HDD	MAX 2*2000GB SATA	
Language	English/German/Spanish/Russian/Chinese/French/Korean/Turkish/ Portuguese/Italian/Japanese	

DH4-PE08V
DH4-PE16V



FEATURES

- **IE browser as well as strong client control**
Host' functions and parameters can be configured by remote, and less than 64-channels large-scale centralized monitoring software will be presented.
- **Full D1 Playback**
8-channel full D1 real time recording and network transmission work simultaneously;
1-channel to 8-channel D1 playback.
- **Convenient**
The backup file can be directly generated to be with AVI format. Support for DVD, multimedia interface, LCD TV, computers, mobile phones and other players, without format conversion.
- **Mobile Monitor**
Anytime, anywhere, all in control
- **Multi-language system**
System directly supports Simplified Chinese, Traditional Chinese, English, German, French, Spanish, Portuguese, Italian, Russian, Turkish, Japanese, Korean, etc., total 12 languages.

Applications



Green City



Sports Centre



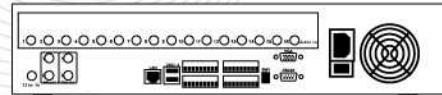
Transport



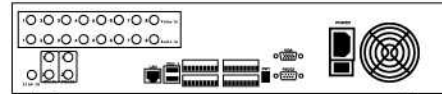
Airport

Back Panel

DH4-PE16V:



DH4-PE08V:



Specification

Model Number	DH4-PE08V	DH4-PE16V
Multi Task	Double Duplex	
Video Input	8 BNC	16 BNC
Video Output	1 BNC, 1 VGA	
Audio Input	8 BNC	16 BNC
Audio Output	1+1BNC	
Line in	1BNC	
Network	1 RJ45 10/100/1000MB, TCP/IP, PPPoE, DHCP, DDNS	
Alarm Input/Output	8/4	16/4
Backup	USB 2.0, Network, DVD-RW	
Video Compression	H.264	
Average Bit Rate Size	6~9KBytes	
Live Display Resolution	NTSC 720 × 480/PAL 704 × 576	
Recording Rate	NTSC 720 × 480 240fps PAL 704 × 576 200fps	720 × 480 480fps 704 × 576 400fps
Recording Mode	Manual, Timing, Alarm, Motion Detection	
Communication Port	RS-485, RS-232	
Playback Speed	Fast Forward × 1,2,4,8	
Controller	Mouse, Remote Control, Panel	
Power Input/Output	AC110V ~ 220V(optional)	
Dimension/Weight	440(W) × 445(D) × 90(H)/7.27kg	440(W) × 445(D) × 90(H)/7.3kg
HDD	MAX 8*2000GB SATA	
Language	English/German/Spanish/Russian/Chinese/French/Korean/Turkish/ Portuguese/Italian/Japanese	